



QUATTRO 4L

AMPLIFIED BLUETOOTH NECKLOOP USER GUIDE



Welcome

Thank you for purchasing the ClearSounds Quattro 4L Amplified Bluetooth Communication System. You are either really smart for purchasing the Quattro 4L or someone really likes you and bought this for you. Or maybe you are both smart AND lucky to have someone who gave you the Quattro 4L. Either way, nicely done.

The Quattro 4L is an innovative Bluetooth Communication System. Bluetooth is a technology that uses radio transmissions to exchange data between devices over short distances. It offers an array of features that will connect you to your mobile phone so you can actually hear the conversations clearly, connect you to your music & TV; bringing the joy of entertainment back. It will allow you stress-free meetings & one-on-one conversations by bringing sound directly to your ears, significantly reducing background noise.

With all this awesomeness comes some new technology that may require a learning curve. Have no fear; our remarkably patient & passionate team of Customer Solutions Consultants are here to help. In addition, we have created a pictorial Quick Start Guide to get you up & running quickly. And that's not all! We have developed a series of instructional videos for those of you who really don't like manuals.

Contact Information

ClearSounds Communications, Inc.
1743 Quincy Avenue, Suite 143
Naperville, IL 60540 USA

800-965-9043 (toll-free)

Information Online

To view & print additional copies of this manual, quick-start guide or spec sheet or to view instructional videos, please visit the Support section on our website.

www.clearsounds.com



Safety Precautions

The following precautions are the kind of boring but important information you should read to ensure maximum performance and safety when using the Quattro 4L. Although it may seem fairly obvious that standing outside in a lightning storm wearing an electronic device is not wise, we do have to officially advise you that it's not a good idea to do that-- along with these other nuggets of wisdom.

Warnings



Warnings must be observed to prevent bodily injury.

WARNING: Use the equipment only in the described manner to avoid bodily injury or damage to the equipment.

WARNING: Locate and use the Quattro 4L away from water and damp areas, such as swimming pools, bathtubs, sinks and damp basements, and do not use the Quattro 4L when you are wet, to avoid electrical shock.

WARNING: Do not overload extension cords or power strips. This can result in electric shock.

WARNING: Avoid using the Quattro 4L during an electrical storm. There is a slight risk of electrical shock from lightning during a storm.

Safety Precautions

WARNING: Use the Quattro 4L only with the supplied AC power adapter assembly. Other types of power adapter assemblies can damage the Quattro 4L and cause personal injury.

WARNING: The Quattro 4L can amplify volume which can cause hearing loss. Instruct each user of proper usage, adjust the volume to each user's personal preference and adjust the volume to low when not in use.

WARNING: Do not spill liquid on the Quattro 4L or clean it while it is plugged in to AC power. This can cause a short circuit, a fire or electric shock.

WARNING: Do not push any type of object into the Quattro 4L. Contact with dangerous voltage points can occur, resulting in fire, electric shock or parts damage.

WARNING: Do not disassemble the Quattro 4L. Dangerous voltage or other risks can occur. Use after incorrect reassembly can lead to electric shock.

WARNING: Keep the Quattro 4L out of reach of small children.

WARNING: The Quattro 4L contains a magnet in the body of the unit. This may affect pacemakers. If you wear a pacemaker, please check with your instrument provider to verify if the Quattro 4L will affect your pacemaker.

Safety Precautions

Cautions



Cautions indicate practices that could harm the Quattro 4L or other objects.

CAUTION: Some electronic devices that are not properly shielded will generate electromagnetic interference (EMI) that may cause buzzing or odd sounds in the Quattro 4L (or any headset for that matter). Examples include PCs, automobiles and large screen TVs.

CAUTION: Turn off the Quattro 4L in any facility where posted notices instruct you to do so. Hospitals or health care facilities might include equipment that is sensitive to external radio frequency (RF) energy that can cause electromagnetic interference (EMI).

CAUTION: While onboard aircraft, turn off the Quattro 4L in accordance with airline regulations and crew instructions.

CAUTION: If you use any personal medical device, consult the manufacturer of the device to determine if it is adequately shielded from RF energy. Your physician may be able to assist you in obtaining this information.

CAUTION: Avoid dropping the Quattro 4L.

Safety Precautions

CAUTION: Do not expose the Quattro 4L to excessive moisture, including sweat, humidity or steam.

CAUTION: Connect the supplied AC power adapter assembly into a surge protector. Power surges can damage the equipment.

CAUTION: Use only a cloth slightly dampened in a mild soap and water solution to clean the unit. Do not use harsh chemical or solvent cleaners or abrasive detergents.

CAUTION: In these circumstances, refer to our customer service department:

- Liquid spills in the Quattro 4L, or it is exposed to rain or precipitation.
- The Quattro 4L does not operate according to descriptions in this manual, or performance distinctly changes.
- The Quattro 4L is dropped or the casing is damaged.

Contents

Unpack	9
Getting Familiar	10
Getting Started	13
Engage the Battery	14
Charge the Battery	15
Operating the Quattro 4L.....	17
Hearing through the Quattro 4L.....	17
Pairing & Connecting	18
Breaking the Bluetooth Connection.....	20
Voice Control.....	22
Calling.....	23
Answer a Call.....	26
Call Waiting.....	27
Listening to Music/Videos/Audio Books.....	29
Intercom Feature	30
Resetting the Quattro 4L.....	32
Troubleshooting	33

Contents

Power and Connection	33
Sound	35
Warranty	37
Additional Products	39
Bluetooth Terms.....	40

Contents

Unpack

Ensure that your packing box includes all of these parts. If any parts are missing or damaged, please contact your vendor or ClearSounds.

IMPORTANT: YOUR RECEIPT IS REQUIRED FOR WARRANTY. PLEASE RETAIN YOUR RECEIPT.



Quattro 4L neckloop



USB charging cable



Loop and loop adjustment toggle



AC adapter

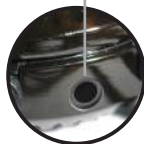
Getting Familiar



Charging port: This is where you plug the micro USB charging cable into the Quattro 4L.

MFB Base Multi-Function Button: This button is used to initiate & answer calls, turn the Quattro on & off, pair the Quattro 4L to Bluetooth devices (e.g. mobile phone), switch between calls and initiate Siri or S-Voice for voice activation.

Earbud Jack: This jack accepts any 3.5mm audio-only headsets. We recommend our patented SmartSound Ear buds.



Getting Familiar

Main Base Unit



MFK Multi-Function

Key: This button is used to answer & end phone calls. It pauses & plays music. Press twice to activate the voice control for the second device.
-- See page 22, Step 1 of Voice control.

Volume & Scroll Keys:

These keys are used to turn the volume up & down or skip forward & backward when listening to music.



8-wire Neckloop: This cord hangs the Quattro 4L around your neck like a necklace. This is an 8-wire loop that connects to hearing aids with t-coils, delivering sound directly through the hearing aids when they are in t-coil setting.

Getting Familiar

Engagement + / -



Battery Engage Switches: There is a battery engage switch on the Quattro 4L unit, which **MUST** be in the **+** position on both for it to function. By switching to the **-** position, the battery is disengaged from the circuit. This switch does **NOT** need to be put in the **-** position; its purpose was only to protect the integrity of the battery during storage.

Getting Started

Before using your Quattro 4L for the first time, there are four key steps you need to take to get started.

- 1. Engage the Battery on the Quattro 4L unit.**
- 2. Charge the Quattro 4L.**
- 3. Pair the Quattro 4L with your Bluetooth devices.**
- 4. Connect the Quattro 4L to your paired devices.
(max. 2 at a time).**

In the following pages, we will walk you through each step in this order. At the back of the manual, you will find a glossary of key terms we use.

It would be a good idea to get familiar with these terms as it will make setting up and using your Quattro 4L much easier. Plus, throwing out some of these terms will make you sound really smart at a party.

Getting Started

Engage the Battery +/-

On the back of the Quattro 4L unit, there is a small switch labeled +/- . Using a paperclip or pen tip, move the switch to the + position. **This is the only time you will ever need to touch this switch.**



In order to preserve the integrity of the battery while the Quattro 4L travels from the production line to our warehouses and the warehouse of retailers across the country, we protect it by keeping the battery disengaged.

Similar to the battery pull tab you might see on a new toy or hearing aid batteries in their packaging, once you remove the tab, the battery becomes engaged. You will only need to do this once; **this is NOT an on/off switch.**

Getting Started

Charge the Battery

1. Connect the micro USB connector end of the charging cable to the Quattro 4L. Connect the large USB connector end to the AC adapter.**



2. Plug the AC adapter into a wall outlet or surge protector.



** You can also charge the Quattro 4L by plugging the large USB connector end into the USB port on your desktop or laptop computer. Make sure the computer is plugged into a power source.

Getting Started

The Quattro 4L is fully charged when the indicator light turns blue.

Charge your Quattro 4L **every night** for maximum performance.



To protect your Quattro 4L from power surges while charging, plug into a surge protector.



Operating the Quattro 4L

Hearing through the Quattro 4L

Alrighty, we're making progress now - only one more thing to do and you'll be ready to experience the remarkable sound the Quattro 4L offers! We've walked you through charging the Quattro 4L, the next step is to put it on and connect via the t-coil setting on your hearing aid or cochlear implant OR use our SmartSound Earbuds (purchased separately) or whatever headset you choose with your Quattro 4L.

Wearing Your Quattro 4L:

Wear the Quattro 4L around your neck like a pendant.

To use the Quattro 4L with T-Coil hearing aids or cochlear implants:

1. Confirm with your hearing care professional that your hearing aid or cochlear implant is equipped with a t-coil. It's also referred to as a "t-switch".
2. Set your hearing aid or cochlear implant to T or MT (depending on your device). If you do not have hearing aids or a cochlear implant or your hearing device(s) does not have t-coils, plug the optional SmartSound Earbuds (sold separately) or other headset into the headset jack.



Getting Started

Pairing & Connecting

About Pairing: Now that you have the Quattro 4L fully charged, it's time to pair it to your Bluetooth devices. The first time you use a Bluetooth device with the Quattro 4L, you must pair the device with the Quattro 4L. Pairing is the process of creating a constant link between the Quattro 4L and the Bluetooth device. Think of it like square dancing in junior high school gym class; The teacher first “pairs” you with a dance partner, you're not dancing yet; you're just standing there “paired” together.

About Connecting: Once a device has been paired with the Quattro 4L it will automatically connect moving forward so that you can listen to the device through your Quattro 4L. The Quattro 4L will automatically connect when:

- The Quattro 4L and the device are **within 33 feet** of each other (in range).
- The Quattro 4L and the device are both turned on.
- Bluetooth has been enabled on the device.

Getting Started

Pair & connect the Quattro 4L with a Bluetooth-enabled device for the first time:

1. The Quattro 4L must be powered off. We have not provided instructions on turning it on yet, so unless you've figured out how to turn it on, it should still be off.
2. Put your Bluetooth device in pairing mode. Consult the User Guide for your Bluetooth device for detailed instructions on how to put that device in pairing mode.
3. On the Quattro 4L, press and hold the MFB (multi-function button.) You will hear **Power On**, keep holding MFB until **Pairing** is announced.

NOTE: For individuals without hearing aids, you need ear buds or a headset of your choice to hear audible announcements. We recommend our SmartSound ear buds.

4. When the Quattro 4L and your Bluetooth device have successfully been paired and are now connected, on your phone, the Quattro 4L will appear in the list of connected devices.

Getting Started

Pair & connect the Quattro 4L with additional Bluetooth devices:

1. Power off the Quattro 4L by pressing & holding the MFB until **Power Off** is announced in your headset, hearing aid, or ear buds. Keep the Quattro 4L OFF until the new Bluetooth device is in pairing mode.
2. Follow steps 2 - 4 above. If the device is a 2nd mobile phone with a display, Quattro 4L will appear on the list of connected devices.



Breaking the Bluetooth Connection (aka Disconnecting)

You can keep a device paired to the Quattro 4L, and break the Bluetooth connection between the Quattro 4L and the Bluetooth device.

You would break the connection for the following reasons:

- Since only two devices can be connected to the Quattro 4L at once, there may be a circumstance where you want to keep a device on but want to “break” its connection to the Quattro 4L to make room to connect the Quattro 4L to a different device.

Getting Started

- You are connected to a device you did not want to be connected to.
- You are no longer using the device you are connected to and want to disconnect until you need it again.

To break the Bluetooth connection (aka Disconnect):

1. **Turn the Bluetooth device off.** This breaks the connection; however, when you turn it back on and the device is still within the 33-foot range, the Quattro 4L will find it & connect.
2. **Turn off Bluetooth in the settings of the Bluetooth device.** (Follow the instructions in the Bluetooth device User Guide, if necessary). This allows you to break the connection while leaving your device on. When you are ready to re-connect, on the device, turn Bluetooth back on. Once Bluetooth is turned on, the Quattro 4L will automatically find & connect when it comes within 33 feet of the device.

NOTE: If the Quattro 4L is moved outside the Bluetooth connection range (which is approx. 33 feet), you will hear “out of range” announced. (If you have the Quattro 4L connected to the T-coils through your hearing aid or in your earbuds, we recommend our SmartSound ear buds — sold separately.)

Operating the Quattro 4L


That's it! You are ready to start enjoying all the wonderful sound and freedom the Quattro 4L has to offer! Read on for instructions on how to make and answer calls using your Quattro 4L, listen to music and experience the many additional features the Quattro 4L offers.

Voice Control

If a Bluetooth Mobile Smart Phone includes a voice control feature (such as Siri or S-Voice), you can activate voice control from the Quattro 4L for hands-free dialing.

To activate voice control:



1. On the Quattro 4L push the MFB  twice (2x). If your smart phone is the 2nd device you have connected, push the MFK twice (2x).**
2. Your smart phone will display the voice control screen. Now speak into the Quattro 4L.
3. Based on the features of your smart phone, it will operate as if you were speaking directly into the phone.

Operating the Quattro 4L

Calling

Celebration Break....

Yahoooo! You are ready to start communicating using the Quattro 4L. Taking calls and making calls on your Bluetooth mobile phone is easy. We know Bluetooth can be intimidating if it's new to you. If you've mastered it- terrific! We are here to help if you get stuck. Remember to check out the instruction videos on our website 24 hours a day for immediate support www.clearsounds.com. If you really want to hear the docile tone of our Customer Solutions Team, call us at 800-965-9043, M-F 8am-5pm CT.

Be prepared to take phone calls and to make phone calls with your Quattro 4L by confirming the following:

- The Quattro 4L is charged, powered on and placed around your neck.
- Your hearing aid or CI is set to T or MT. If you are using the ear buds make sure they are plugged in and on your ears.
- The Bluetooth phone is charged, powered on & connected to the Quattro 4L (within 33 feet).

Operating the Quattro 4L

To adjust the volume during a call:

1. press the ◀ key on the screen to reduce the volume and the ▶ key to increase the volume. There are 15 volume levels. The Quattro 4L remembers the last level that was set.



To mute and unmute a call:

1. Press and HOLD the ◀ key on the screen.
2. The Quattro 4L announces "Mute On" or "Mute Off."



To end a call:

1. Press and HOLD the MFB. The Quattro 4L announces "Call Terminated."





Placing a Call by Dialing from the Phone:

1. Initiate a call using your mobile phone as you normally would. You will hear the phone ringing through your hearing aid or CI or through your ear buds or headset. When the person you called picks up or you get voicemail, start talking.

Operating the Quattro 4L

Placing a Call from Last Number Dialed (aka ReDialing):

1. Simultaneously press and HOLD the MFB and  key.  The phone will call the last number you dialed.

2. Press the MFB.  **Dialing** is announced.

To End the Call:

1. Press and hold the MFB.  The Quattro 4L will announce "Call Terminated."

Operating the Quattro 4L

Answer a Call

When a call comes in, you will hear the phone ringing through your hearing device or ear buds . If you are listening to music or an audio book when the call comes in, it will pause and you will hear the ringing.

To answer:



1. Press the MFB 1x to connect the call.

2. The call will connect.

To reject a call:






1. Press and hold the MFB button.
2. You will hear “Call Rejected” and caller will be sent directly to your voice mail.

Operating the Quattro 4L

Call Waiting

If your phone service includes Call Waiting, you can answer incoming Call Waiting calls during a telephone conversation. Incoming call numbers appear on the Quattro 4L screen.

To answer a Call Waiting call:


1. Tell the person with whom you are speaking that you will put him or her on hold.
2. Press the MFB twice (2x),  and answer the incoming call.
3. To switch back to the first caller and leave the 2nd call on hold, press the MFB twice (2x). 
4. To switch between callers and end the call that you are on, press and HOLD the MFB. 

Operating the Quattro 4L

Transferring a call between the Quattro 4L neckloop and a phone

Let's say a call comes in and you answer it directly from the handset out of habit or you are getting ready in the morning and you set your Quattro 4L down and couldn't get to it fast enough. You really want to take the call using the Quattro 4L cause, well, that's why you have it - it helps you hear better. What do you do? Simple...

To transfer calls between the phone handset and the Quattro 4L:

1. During the conversation, press and HOLD the  right arrow key until you hear a tone. Once you hear the tone, the call is now active through the Quattro 4L.
2. If you know your phone well enough, you can also switch to and from the Quattro 4L using your cell phone.

Operating the Quattro 4L

Listening to Music/Videos/Audio Books

We love our music! In fact, improving the ability to hear all the detail, richness and passion in music is one of the major motivating factors in the design of the Quattro 4L. Music moves us; it brings us to life! Start loving your music again with the Quattro 4L!

To Listen to Audio (music, videos or audio books):

1. Pair & connect your Bluetooth device. If you listen to music using your smart phone, you've probably already paired & connected it. If it is a new device, follow the steps outlined on page 19 to pair & connect.
2. Make sure your hearing aid or CI is in T or MT mode or the ear buds are plugged in.
3. Open your music or audio player app and select the song, video or audio book you wish to listen to.
4. Hit play on your Bluetooth device and enjoy!

To make volume adjustments, skip songs, etc refer to the chart on the next page.

Operating the Quattro 4L

Adjustment	Action
Volume	On the screen, press ◀ or ▶
Pause and unpause	Press and hold MFK —
Skip to the next song or video	On the screen, press and hold ▶
Skip to the previous song or video	On the screen, press and hold ◀

Intercom Feature

Seriously, what more could we possibly add to this remarkable device? How about the ability to “Intercom” between two Quattro 4L devices! Sweet! You can use your Quattro 4L to talk to someone wearing another Quattro 4L within 33 feet of each other. This is extremely helpful when two people with hearing loss are in a noisy environment and need to eliminate background noise and reduce the signal-to-noise ratio.

To initiate intercom communication with another Quattro 4L:

1. If there are any devices currently connected to either Quattro 4L, disconnect them. (See page 21 for detailed instructions on disconnecting a device from the Quattro 4L.)

Operating the Quattro 4L

2. Pair & Connect the two Quattro 4L devices:

- a. Power Off both Quattro 4L devices
- b. Press & hold the MFB on both devices until you hear **Pairing**. The red and blue indicator will flash rapidly.
- c. On only one of the Quattro 4L devices, press the MFB once (1x). You will hear "Searching for Quattro" announced.
- d. Once the Quattro 4Ls find each other, you will hear "Paired" announced.
- e. Double tap the MFK  on either device. In approx. 5 seconds, you will hear "Connected" announced. Now the two Quattro 4L devices are connected via intercom and you can speak to each other.
- f. To end the Intercom connection, press & hold the MFB  on either device.
- g. The other Quattro 4L is now one of the connected devices on both devices. The next time you wish to connect these two devices via Intercom, simply double press the MFK on either device. You will hear "Connected" announced.

Operating the Quattro 4L

Resetting the Quattro 4L

Resetting the Quattro 4L resets the device to its factory settings. This deletes all Caller ID records, all paired devices, and sets the volume back to the default level. The only reason you would want to reset the Quattro 4L is if you are loaning it to or receiving it from someone else.

To reset the Quattro 4L to factory settings:



1. Press and hold MFK until the blue indicator light turns on for about 1.5 seconds, then flashes every second afterwards.
2. The Quattro 4L will still be powered on but all paired devices and Caller ID memory will be erased.

To pair devices to the Quattro 4L again, simply follow the steps outlined on page 19.


Troubleshooting

Power and Connection

Symptom	Solution
The Quattro 4L does not turn on.	<ul style="list-style-type: none">• Ensure that the +/- switch on the back of the Quattro 4L is in the + position.• Charge the Quattro 4L. See page 15.
The Quattro 4L won't connect to a paired device.	<ul style="list-style-type: none">• Are other paired devices turned off or on standby?• For connecting with a paired device, see 'Pair & Connect the Quattro 4L with Additional Bluetooth Devices' on page 20.
The Quattro 4L turns off automatically	<p>This occurs in these circumstances:</p> <ul style="list-style-type: none">• The battery lost its charge. Recharge the battery. See page 15.• No device is connected to the Quattro 4L for 10 minutes or longer.

Troubleshooting

Power and Connection

Symptom	Solution
The Bluetooth connection breaks between the Quattro 4L and the Bluetooth device.	<p>Ensure the following:</p> <ul style="list-style-type: none">• The Bluetooth device is within 33 feet of the Quattro 4L.• The Quattro 4L and the Bluetooth device are turned on and charged.• The device's Bluetooth feature is on and connected to the Quattro 4L.
I wander out of range and the Bluetooth connection breaks. The Quattro 4L announces "Out of range." How do I reconnect?	<p>a. Move the Quattro 4L within 33 feet of the device.</p> <p>b. Briefly press MFB.</p> <p>c. If necessary, unpause a song.</p> 

Troubleshooting

Sound

Symptom	Solution
Sound is muffled or non-existent	<ul style="list-style-type: none">• Reposition the Quattro 4L.• Check that volume is sufficient. If the volume is turned up on the Quattro 4L and on the Bluetooth device, turn down the volume on the Quattro 4L or on the Bluetooth device. See page 11.• Check the battery levels of the Quattro 4L and hearing aids.• Ensure the T-Coil setting on your in hearing aids or cochlear implants is functioning and turned on.

Specification

Component	Specification
Supported profiles	HSP, A2DP, AVRCP, HFP
Bluetooth version	4.0 or lower
Frequency band	2.4 G ISM, Channel 79
Modulation system	GFSK
RF Power	Class 2, -6~4DBM
Operating range	33 ft (10 m)
Connection	Multi-point, two Bluetooth devices simultaneously

Warranty

Your ClearSounds Quattro 4L Amplified Bluetooth Neckloop comes with a one year limited warranty from the date of purchase. This product is warranted by ClearSounds against manufacturing defect in material and workmanship under normal use. In the event that this product fails to function properly due to defects in materials or workmanship within one year of the original purchase, return the unit **with proof of purchase** (sales receipt or packing slip, no exceptions) to ClearSounds Communications.

ClearSounds Communications will either repair or replace the unit (with a refurbished unit or unit of equal condition) and return it you (using UPS/USPS ground shipping) at no cost to you. The warranty replacement or repair will be warranted for a period of 90 days or the remainder of the original warranty period (from original purchase date), whichever is longer.

The warranty does not cover accidents, negligence or breakage to any parts. This includes shipping damage, failure to follow instructions, misuse, fire, floods, use of incompatible accessories, acts of God or failure in your phone service carrier's line service. The product must not be tampered with or taken apart by anyone who is not an authorized ClearSounds Communications® representative. Tampering with the Quattro 4L will void any written or implied warranties.

Warranty

If a defect covered by this warranty should occur, promptly contact a Customer Service representative by phone, or log on to www.clearsounds.com to obtain a Return Merchandise Authorization (RMA) number and shipping instructions before shipping the product to us. Any shipment without an RMA number will not be accepted and will be returned to you at your expense. All authorized returned products must be accompanied with proof of purchase and a brief explanation of the problem.

For out-of-warranty repairs and service, please contact our Customer Service department for instructions. The repair shall be warranted for 90 days.

IMPORTANT: YOUR RECEIPT IS PART OF YOUR WARRANTY AND MUST BE RETAINED AND PRODUCED IN THE EVENT OF A WARRANTY CLAIM.

Additional Products by ClearSounds

Ok, well we may be a bit biased, but these products are fantastic complements to the Quattro 4L. Together, they provide a solution for every aspect of communication. From personal listening to mobile phones, TV & entertainment to the office – we've got you covered.

Any hey, since you read through this ENTIRE manual, you deserve a reward. Order any of our Q Portfolio of products online using Coupon Code **IREADIT** and we'll take 25% off your order!! Purchase now at www.clearsounds.com.



SmartSound Earbuds

Because of the reversed position of the speaker unit, the SmartSound™ earbuds significantly reduce pressure on the eardrum & middle ear.

CSRS062

\$49.95



Quattro 4.0 Microphone Clip

A magnetic clip that attaches your Quattro microphone to your jacket, shirt or blazer with ease. Please note: The Quattro microphone is sold separately.

CSQT4CLIP

MSRP \$19.99



Quattro 4.0 Remote Bluetooth Mic Kit

The QT4 Mic is a Remote Bluetooth Microphone that delivers crisp, clear sound from the voice of the person speaking directly to your ears, eliminating distracting background noise. The QT4 Mic is held or worn by the person speaking or placed in the middle of a conference table.

CSQT4MICKIT

MSRP \$99.95

Bluetooth Terms

Bluetooth: A wireless protocol defining the exchange of data between compatible devices over distances up to 33 feet.

Connectable: A Bluetooth-enabled device in range that will respond to another device and set up a connection.

Connected: A Bluetooth-enabled device is within range and communicating over the Bluetooth wireless link. The LCD display will show the name of the device.

Discoverable: When a Bluetooth-enabled device is “discoverable,” other Bluetooth devices can detect, pair, or connect to it. When the Quattro 4L is discoverable by your cell phone, you will see “Quattro 4L” in the list of Bluetooth devices in your cell phone’s Bluetooth menu.

Pairing: The process of creating a persistent link between two Bluetooth devices. This only occurs once; future connections between the devices are authenticated automatically.

Bluetooth Terms

Multipoint: Multipoint is a new development in Bluetooth technology that allows your Bluetooth headset to be connected to two Bluetooth devices at the same time. When a call comes in, the Bluetooth headset knows which device is ringing and will connect to the right one automatically.

EDR: EDR is an optional part of the Bluetooth specification that provides an Enhanced Data Rate (speed) and in some cases improved battery life.

A2DP: The abbreviation for Advance Audio Distribution Profile. A2DP technology is a new music revolution allowing you to send CD-quality stereo music from one device to another without wires. A2DP is stereo music sent over Bluetooth without the hassle of plugging in cables.

Profile: A Bluetooth profile is a specification regarding an aspect of Bluetooth-based wireless communication between devices. In order to use Bluetooth technology, a device must be compatible with the subset of Bluetooth profiles necessary to use the desired services.

